

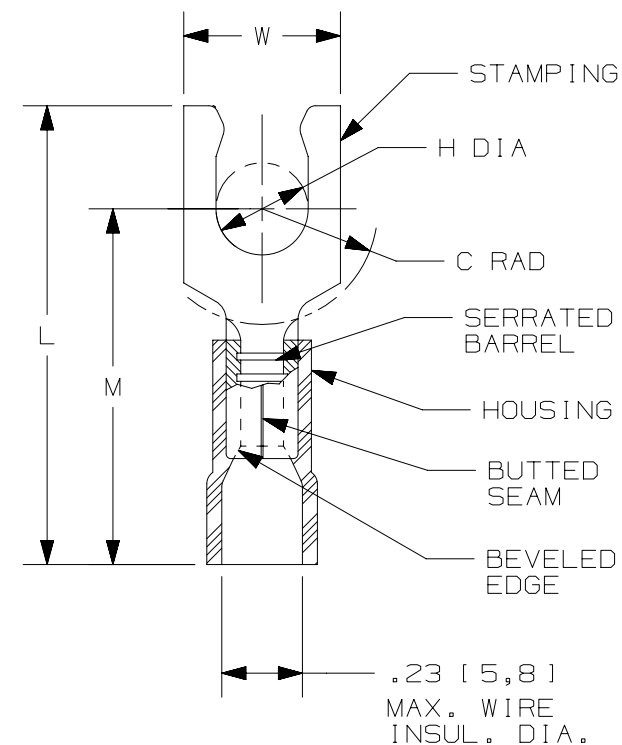
THIS COPY IS PROVIDED ON A RESTRICTED BASIS AND IS NOT TO BE USED IN ANY WAY DETRIMENTAL TO THE INTERESTS OF PANDUIT CORP.

PANDUIT PART #	STUD SIZE	DIMENSIONS in. [mm]					TOOLS
		L ± .03 [0,8]	W ± .01 [0,3]	C ± .02 [0,5]	M ± .03 [0,8]	H ± .01 [0,3]	
EV10-6LFB	#6	1.03 [26,2]	.30 [7,6]	.23 [5,8]	.80 [20,3]	.14 [3,6]	*CT-100A CT-600A (CT-550CH) CT-1550 CT-1551 CT-2500 (CT-2550CH)
EV10-8LFB	#8	1.05 [26,7]	.30 [7,6]	.23 [5,8]	.80 [20,3]	.16 [4,1]	
EV10-10LFB	#10	1.04 [26,4]	.34 [8,6]	.23 [5,8]	.80 [20,3]	.19 [4,8]	
EV10-14LFB	1/4"	1.19 [30,2]	.46 [11,7]	.36 [9,1]	.90 [22,9]	.25 [6,4]	

*RATED FOR 300V, 75°C WITH CT-100A

NOTES:

- UL LISTED AND CSA CERTIFIED FOR:
 - #12-10 AWG [4,0-6,0 mm²] STRANDED COPPER WIRE
 - 221°F [105°C] MAX. OPERATING TEMPERATURE
 - 600 V. MAX. VOLTAGE RATING
(1000 V. IN SIGNS, FIXTURES & LUMINARIES)
- MATERIAL:
 - STAMPING: .04" [1,0] THK COPPER, TIN PLATED
 - HOUSING: VINYL, YELLOW
- WIRE STRIP LENGTH: 5/16" ^{+1/32}₋₀ [7,9mm ^{+0,8}₋₀]
- SEE www.panduit.com FOR PACKAGE QUANTITIES
- DIMENSIONS IN BRACKETS ARE METRIC EQUIVALENT



LISTED
587H
E52164



CERTIFIED
LR31212

						TITLE	
						STRONGHOLD LOCKING FORK TERMINALS VINYL INSULATED, BUTTED SEAM #12-10 AWG	
						CUSTOMER DRAWING	
						ITEM REVISION NAME	00123SHT/00
						DATASET FILE NAME	00123SHT_DC/00
						UNLESS OTHERWISE SPECIFIED, DIMENSIONAL TOLERANCES ARE: IN [mm]	
						.X ± .XXX ± .XX ± ANGLES ±	
						THIRD ANGLE PROJECTION	
						MATERIAL:	
						SEE NOTES	
						DRAWING NUMBER:	
						SH41226	
00	2/18	JHNU	TMR	RGB	RELEASED	00123SH	
REV	DATE	BY	CHK	APR	DESCRIPTION	ECN	